

5 Reasons for RainDrop®

Engineered for Performance

A sloped grid made of damage-resistant polypropylene that breaks self-cohesion of water droplets, immediately forcing water into a gutter. Unlike mesh designs—which keep almost everything out of the gutter, including water—aperture size of the polypropylene grid prevents large debris from clogging the gutter but allows small debris to sweep through.

Absorbs the Heat

With added UV stabilizers, RainDrop®'s polypropylene material is made to be suitably resilient. The dark color of the product soaks in heat from the sun during cold months, naturally melting snow and ice to keep water flowing into the gutters year-round.

Built to Endure

Like the automakers that noticed the benefits of polypropylene's flexible properties for car bumpers, RainDrop® Gutter Guards can withstand a lot of damage, even from trees. Where other materials break or bend, the polypropylene bounces back. RainDrop® carries a 20-Year Limited Warranty.

Designed for Easy Maintenance

Where other products lay flat to handle water, RainDrop® Gutter Guards are designed to be installed at a pitch, as a continuation of the roof, to keep debris moving off the gutter.

Made to Look Good

Featuring clean lines, a low profile, and a dark color, the RainDrop® Gutter Guard blends naturally into most environments. The guard is virtually invisible from the ground, appearing to be nothing more than a shadow line. The design installs easily into roof systems using asphalt shingles, cedar shakes, metal, slate, and tiles. RainDrop® fits most gutter sizes, including 5" and 6" K-style gutters, half rounds, large commercial gutters, trough-style gutters, wood and more.



RainDropGutterGuard.com

Made in the USA

PN 39398



**The Best Professional
Gutter Guard in the World!**

See the next pages to find out why.

World Class Performance

Since 2000, RainDrop® Gutter Guard has proudly upheld a very impressive track record under a vast array of conditions across the USA. 20 Years and not a single complaint!

No Clogs

Unaffected by pollen, pine tar, sap, airborne dirt or roof granules. Any debris that sneaks through will not be of size to clog a properly installed gutter system. Perfect for Pine, Maple and Oak debris. No sharp edges to snag debris.

Huge Water Capacity

Patented arched rib and grid configuration is designed to handle any storm that comes your way.

Durable and Resilient

Polypropylene will not crush, dent, peel or warp. Car bumpers are made of polypropylene because it is TOUGH STUFF and holds up against the elements. It is resistant to mold, mildew and salt spray. If a branch falls on RainDrop Gutter Guard, it bounces back instead of denting.

Invisible Protection

Its dark color provides the highest level of UV Sun Protection, and it appears virtually invisible as a slender shadow line along the gutter.

Sleek Sloping Surface

Does NOT lay flat or below the front gutter edge, minimizing any debris build-up on top. Designed for low-to-no maintenance, and gives your home a clean, well-maintained look.

Compatible
with all
roof types
& gutter
styles



So Long, Snow and Ice

Sliding ice damages gutters—but with RainDrop® it slides right over and off!



Pays For Itself

RainDrop® pays for itself in a few short years by eliminating the dangers, costs, and need to constantly clean your gutters. It is the last gutter guard you will ever need.

Downspout Clean-Out

With or without gutter guards, this strainer keeps dirt and debris from clogging your underground drain pipes.



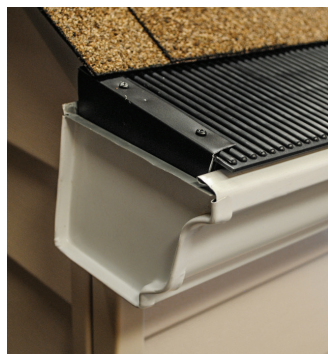
Essential for
Underground
Piping!

Wide Mouth Outlet

Standard drop outlets are too small, have rims, caulk, fasteners and side ledges: all which snag debris and lead to a gutter clog.

Our Wide Mouth outlet is as wide as the gutter floor and angles outward. It gets water out fast and resists clogging. The gutter floor smoothly transitions down into the downspout in a perfectly snag-proof manner, and the bottom connects to match any downspout size.

Optional



END CAPS

(OPTIONAL)

Closes off the system to keep out birds, bees, squirrels and other critters.



MITER

(OPTIONAL)

Provides a smooth transition around the outside corner.

